

# Spelling

Hello and welcome back, in today's lesson we will be looking at some useful rules you can follow to make things a little easier when trying to spell. Here are ten rules to help you get started.



Rule Number 1.

**Y as a long "i"**

The letter Y makes a long sound of I when it comes at the end of a short word that doesn't have any other vowel. Rule Number 1.

**fly**



**cry**



Rule Number 2.

**Y as a long "e"**

When 'y' or 'ey' ends a word in an un-stressed syllable, the y has the long sound of e.

**key**



**money**



**funny**



Rule Number 3.

**I before E**

The spelling is 'i' before 'e' when the sound is long 'e'  
**except after the letter 'c'**

**believe**



**fierce**



Notice the change when there is a c preceding the ie:

### receipt

HIGHWAY 1 TRUCK DEPOT  
39000 HWY 1  
GILROY, CA  
9/24/2016 06:31 AM  
STATION # 3034076  
PUMP: 6 GALLONS: 19.232  
REGULAR @: 2.493 /GAL  
  
SUB-TOTAL: 47.95  
TAX: 3.60  
TOTAL: 51.55  
PAYMENT: \*\*\*\*\*3729  
AUTH # BAAIAD3E  
CUSTOMER COPY

### receive



### ceiling



Rule Number 4.

**E before I**

Write e before i when the sound is a long 'a'.

**reign**



**weight**



**freight**



Rule Number 5.

**Oi or Oy**

Use "oi" in the middle of a word and use "oy" at the end of a word.

**soil**



**boil**



**boy**



**toy**



Rule Number 6.

**Ou or Ow**

Use "ou" in the middle of a word and use "ow" at the end of words other than those that end in n or d.

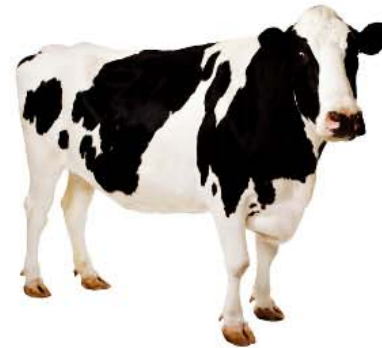
**house**



**mouse**



**cow**



**throw**





Rule Number 7.

**The "ch" sound**

At the start of a word, use "ch." At the end of a word, use "tch." When the "ch" sound is followed by "ure" or "ion", use t.

**choose**



**pitch**



**watch**



**catch**



**picture**



Rule Number 8.

## Double Consonants

When b, d, g, m, n, or p appear after a short vowel in a word with 2 syllables, you should double the consonant: b, d, g, m, n, or p.

**rabbit**



**dagger**



**drummer**



Rule Number 9.  
**Short-Vowel Rule**

When one-syllable words have a vowel in the middle of the word, the vowel normally has a short sound:

**mom**



**dog**



**cat**



If the letter after the vowel is f, l, or s, this letter is often doubled.

**staff**



**ball**



**pass**



Rule Number 10.

## Two-Vowels Together

When two vowels are next to each other, the first vowel is usually long (the sound is the same as the sound of the letter) and the second vowel is silent.

**plain**



**road**



**jeans**



**pie**



**rain**

